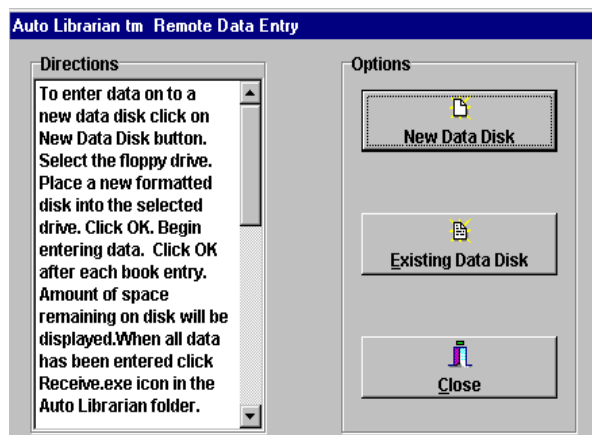


Auto Librarian™ Remote Data Entry SE/V4 is a utility which allows books to be entered at a remote computer and saved onto floppy disks or usb flash drives to be uploaded into the Auto Librarian™ SE Library Server or V.4. This utility enables volunteers and/or library workers to perform book data entry on their home or office computers thus building the book database quickly.

FEATURES

Easy to Use

Auto Librarian™ Remote Data Entry SE/V4 is an easy to use book data entry program to be used in conjunction with **Auto Librarian™ SE Library Server or V4**. Simply right click the Remote Entry icon in the Remote Data Entry folder and send it to a floppy disk or usb flash drive to give the file to data entry personnel. The file is then copied to the user's hard drive. The user simply double clicks the Remote Entry icon, selects either the New Data Disk for first time use or the Existing Data Disk to add to a file, chooses the appropriate drive letter and begins entering the book data by filling out a book entry form for each book to be entered into Auto Librarian™. The data is saved to a floppy disk or usb flash drive. The amount of space remaining on the floppy disk or usb flash drive is shown after each book is entered. When the disk or usb flash drive becomes full a new disk or usb flash drive is used.



Floppy disks or usb flash drives are then brought to the main Auto Librarian™ server to be uploaded into the Auto Librarian™ book database. It is that simple!

Any Windows 8 or 7 computer can be used for **Auto Librarian™ Remote Book Data Entry SE/V4**. With a group of several volunteer data entry personnel working a library's book database can be created quickly and circulation can begin sooner.

Includes onboard help file for ease of use. No manuals or instruction sheets to copy.

Remote Data Entry SE/V4 Fact Sheet Page 2

Remote Entry - Add Books/Items Form

Drive Space Available: 1,422 KB

OK Cancel Add Another Close

Bookman/ Author/ Manufacturer

Title/ Item

Callnumber

Subjects

Additional Information

ISBN/ Set #

LCCN/ Ctrl #

Pages

Cost \$0.00 Copyright

Due Date Type

Illustrator

Summary

Auto Librarian™ Book Entry Form

To upload the data from floppy disks or usb flash drives at the main Auto Librarian™ server the user simply double clicks the Receive icon in the Remote Data Entry folder, clicks the Receive Remote Data button, chooses the appropriate floppy drive or usb flash drive and the records can then be viewed, edited and/or deleted and sent to the Auto Librarian™ book database with the click of a button.

Remote Data Entry Receiving Menu

Step 1 Receive Remote Records

Step 2 View Remote Records

Step 3 Send Records To Auto Librarian

Close Help

Affordable Site License

One time purchase - may be distributed to an unlimited amount of users for book data entry purpose for 1 library site only. See price sheet or pricing link on our website: www.autolib.com for current pricing.